

Backcountry Horsemen of North Carolina

BCHA National Meeting 2023 State Report



Back Country Horseman of NC assisted with delivery of food supply's and other materials for the Rocky Top ATC crew working on the trails in the TriCorner Knob area last week. We were able to pack in an additional 80 lbs of mulch for the privies as well. 20 mile trip from Cosby to TriCorner Knob and back out. Long day.. This support was enabled by grant support from the NC Horse Council



JULY 22-23

SHINING ROCK AREA TRAILS RESTORATION

Join the Carolina Mountain Club and Back Country Horsemen on this special event as we restore the Ivester Gap, Fork Mountain, Shining Creek, and Art Loeb trails near Ivester Gap on this weekend overnight. We'll be out rehabbing the trail and making new friends. No experience necessary, experienced CMC trail members will be on site to supervise and train. If you have always wanted to do trail work to give back, this is your opportunity. A great learning experience awaits! We are supported in this event by the Pisgah Conservancy and the Pisgah National Forest.

YOU DO NOT HAVE TO BE A CMC MEMBER TO COME ON THESE WORK DAYS. We will have release forms you can fill out before we start work. **If you are under 18, you must have a parent or guardian with you.**

Please wear sturdy boots, long pants, work gloves, food, and cool weather camping gear. We will provide tools. We will carpool to the parking area and hike in.

Please contact Paul Curtin at: pncurtin@hotmail.com with questions and to sign up.

Registration required, limited to 1st 25 signed up. More details will be provided once you are registered.

Learn Trail Maintenance Skills

Restore Trails in a Sustainable Way for Future Generations



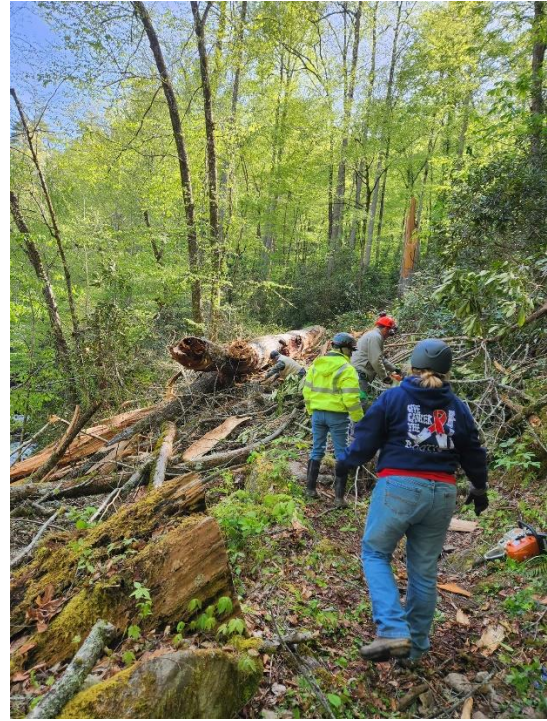
Overnight adjacent to Shining Rock Wilderness at Ivester Gap, trail work in the Wilderness 7/22 pm and 7/23 am

Meet at 9:00 am Saturday at Black Balsam parking lot off PS 816.

Or, meet at the French Broad Overlook, just above the NC191 exit at MM 392.8 on the Parkway @ 8:00 am to car pool to Black Balsam. We will hike in 2 miles to Ivester Gap.

We will return by 2:00 pm Sunday to the Black Balsam parking lot.

Multiple NC BCH chapters participated in this event this weekend. The Shining Rock, Fork Mtn. BCH teams from multiple chapters spent two days working on the Wilderness Equestrian/Hike trail out to Shining Rock. For several years now this trail has not been used by equestrians due to being overgrown. Equine users can now travel out to Shining Rock.



BCH volunteers from NC, SC and TN joined the Big Creek chapter for the Great Smokey Nation Park trail clearing window



2024 Officers

President: Heather Cox

Vice President: David Michael

Secretary: Dinah Austin

Treasurer: Bill Burkhardt

Back Country Horsemen of America				
Volunteer Hours Report				
North Carolina State				
Fiscal Oct 2022 - Sept 2023				
	Totals	Rate per hour/mile/day	Total Value	
Total Basic Hours	2855	\$31.80	\$90,796.95	Calculated per hour
Total Skilled Hours	1059	\$47.70	\$50,490.45	Calculated per hour
Total Non Trail Hours	1238	\$31.80	\$39,368.40	Calculated per hour
Total Travel Time	1364	\$31.80	\$43,384.74	Calculated per hour
Total Hours	6516			
Personal and Stock Miles	25958	\$1.00	\$25,958.00	
Total Trail Miles	25958			
Power Equipment	646	\$110.00	\$71,060.00	Calculated per mile
Heavy Equipment	70	\$110.00	\$7,700.00	Calculated per mile
Total Equipment Hours	716			
Total Stock (Pack and Saddle)	503	\$100.00	\$50,300.00	
Total Stock Days	503			Calculated per day
Total Donations	\$120.00		\$120.00	
		Total	\$379,178.54	

Pisgah Chapter



*BCH Pisgah created a
fantastic promotional
video:*

<https://www.youtube.com/watch?v=xfMuUfTiubE>

Pisgah View State Park: A NEW park is on the horizon

Located in Buncombe County 18 miles southwest of downtown Asheville, Pisgah View State Park rests in the shade of Mount Pisgah, one of the many beautiful sights of the Blue Ridge seen from the Blue Ridge Parkway. Small spring-fed waterfalls nourish the rich mountain coves that brim with spring wildflowers. Mammals, migratory birds, and amphibians all find a home here.

For years, humans thrived in this mountain valley, finding food, clean water, and shelter. Five federally recognized tribal nations have ancestral connections to the land; they are the original stewards of this place:

- Eastern Band of Cherokee Indians
- Cherokee Nation
- Muscogee (Creek) Nation
- Catawba Indian Nation
- United Keetoowah Band of Cherokee Indians

Settlers later lived in the valley for generations, culminating in the development of the Pisgah View Ranch as a place to explore nature and replenish the spirit. Today, the land still provides a retreat for all living things. For people, it offers a recommitment to life in harmony with nature.

When Will the Park Open? The initial land needed has been acquired for the park between 2019 and 2021. The park's master plan, now in development, will seek public input to identify and prioritize the first accesses, facilities, and opportunities established at the park when it is opened to the public, as well as how the park will be managed into the future.

Pisgah View State Park will offer a universally accessible park for visitors. Before opening the park, the Division will complete a master plan, hire staff, and design and construct the first facilities. We estimate that the park will open sometime in 2025.

<https://www.ncparks.gov/state-parks/pisgah-view-state-park>

Pisgah is always busy with trail maintenance and community involvement:



BCH of Blue Ridge 2023 Report

Volunteer hours

Blue Ridge had a great year, turning in a total of efforts with a value of over \$135,000.00. Work was done under volunteer agreements with three USFS ranger districts, a state park, Blue Ridge Parkway and the Great Smoky Mountains Nat Park.

Advocacy

BR has continue to participate in the collaborative trail planning efforts in the USFS Grandfather District. We're excited to report that our Old Fort project was awarded the rest of the full funding needed to complete the project (additional 2.5 million on top of the current funded 1 million) which will add 10 miles of new horse trails to the total 42 miles of new trails. Using the current trails, this opens an excess of 12 new loop opportunities from 4 miles to 24 miles round trip. Also funded was a dedicated horse trailer parking and horse watering access.

There's great momentum on our new project, the Mulberry Trails near Lenoir NC and we hope to have funding from NC State's Great Trail State Initiative to complete the NEPA studies & public input phases this year.

Education

Our members completed chain saw, CPR/1st Aid & trail crew leader training this year. Of concern, we noted that the majority of training on sustainable trail creation is being provided by IMBA SORBA for mountain bike enhanced trails. Of note, the Recreation Manager of the newest NC Park, Pisgah View Ranch State Park (which currently is proposed for hike/horse only) had access to no information about building sustainable horse trails. We provided him with Gene Woods' book on building equestrian trails (also provided same to the trainer, J Poole @ McDowell Tech) They both appreciated it, they had tried to get a copy via Amazon that quoted a price of \$395 which was not in their budget.

Special Highlight – Ken & Julie Carpenter

We'd like to highlight the work of our members, the Carpenters as thinking "out of the box" and contributing tons of hours to our volunteer efforts. Ken works through the High Country District of the Volunteers of the Blue Ridge Parkway. Their territory includes the 30+ miles of carriage/horse trails @ the Moses Cone Park. Ken coordinates with local colleges, fraternity and sorority organizations to multiply his efforts. Its not unusual for him to have 100 volunteers show up for his weekly Friday work days. These young people can do a flat ton of work AND they get educational credit for the work too! The Carpenters only report the work they do on horse trails to us, which is a fraction of their total work but for 2023, it was 459 hours of work, and countless hours spent coordinating all these efforts. Pictures attached.

Respectfully submitted,

Deirdre Perot

BCH of Blue Ridge President

Blue Ridge Pics:





BCH Croatan Provided this video:

https://www.youtube.com/watch?v=AjiV_vGsZ30



The Uwharrie Chapter has the largest membership in the state. 30miles of virtually bike free single track trails combined with 28 electric serviced site draw a large amount of stock users. Uwharrie accomplishments:

Regular scheduled work days

Scavenger hunt..20 new members \$1300 profit

Upcoming poker run

Upcoming member fellowship campout

New events committee

Big Creek Chapter

With just a handful of members the Big Creek Chapter leads the charge of our states massive Great Smokey Mountain Chainsaw Window allowing our GSMNP trails to open for the summer. Riders regularly log 200 miles clearing HUNDREDS of trees. We thank our Big Creek chapter along with the other chapter volunteers that assist during this month long annual project.
